

# State of Wyoming Corner Record

(In compliance with the *CORNER PERPETUATION AND FILING ACT*, Wyoming Statutes, 1997 Section 33-29-140 et. se., and the Rules and Regulations of the Board of Professional Engineers and Professional Land Surveyors)

Reverse side of this form may be used if more space is needed.

Record of original survey and citation of source of historical information (if corner is lost or obliterated). Description of corner monumentation evidence found and/or monument and accessories established to perpetuate the location of this corner. Sketch of relative location of monument, accessories, and reference points with course and distance to adjacent corner(s) (if determined in this survey). Method and rationale for re-establishment of lost or obliterated corner.

**RECORD:** G.L.O. survey by J.W. HAMMOND in 1873 "80.0 a Sandstone 22x12x3 set 16 inches deep marked 5 notches on the West and 1 notch on East."

**FOUND:** Nothing Found. Used fence corner for latitude alignment and found 1/4 corners found east and west of this point for departure alignment.

**Re-monumentation:** Set 2.5" Alum. cap 3/4"x30" Rebar 0.2' above ground 1.2' South of fence corner running North-East-West.

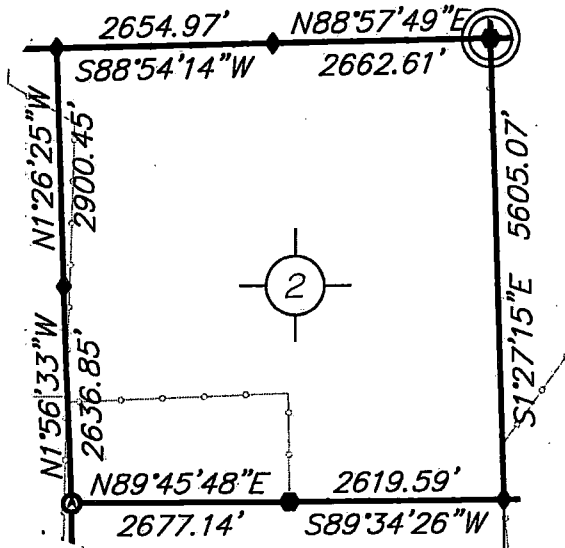
Point #	North	East	Elev.
1861022	389429.02	934241.99	4699.61

NAD83, position:

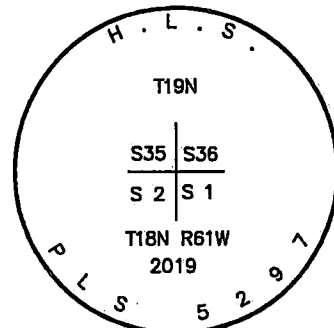
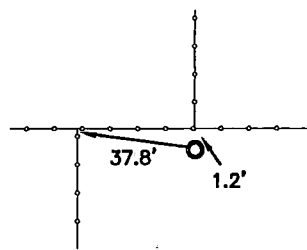
**NOTE:**  
BEARINGS AND DISTANCES SHOWN HEREON ARE BASED UPON GRID USING NAD83 WYOMING EAST ZONE AND TRIMBLE R8 GPS OBSERVATION

### Monument Location

corner referenced this record =



### SKETCH



### Monument Inscription

Date of Field Work: April 28th, 2019

Office Reference: DRG-21810, Pt. 1961022

### Cross Index Plat

	1	2	3	4	5	6	7	8	9	10	11	12	13	14	15	16	17	18	19	20	21	22	23	24	25		
A																											A
B																											B
C		6		5		4		3		2		1															C
D																											D
E																											E
F																											F
G																											G
H																											H
J																											J
K																											K
L																											L
M																											M
N																											N
O																											O
P																											P
Q																											Q
R																											R
S																											S
T																											T
U																											U
V																											V
W																											W
X																											X
Y																											Y
Z																											Z
	1	2	3	4	5	6	7	8	9	10	11	12	13	14	15	16	17	18	19	20	21	22	23	24	25		

Firm/Agency, Address

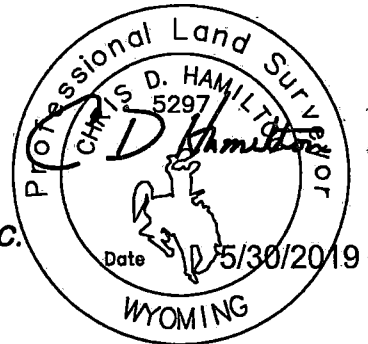
this corner record provided by:

**HAMILTON  
LAND  
SURVEYING**

UNDER CONTRACT TO:

**DRG** RIFFIN & ASSOCIATES, INC.  
1414 ELK ST., SUITE 202  
ROCK SPRINGS, WY 82901  
(307) 362-5028

This corner record was prepared by me or under my direction and supervision.  
**SEAL & SIGNATURE**



This "corner record" was filed at

RECP #: 752863  
RECORDED 5/8/2019 AT 2:32 PM BK# 2620 PG# 1905  
Debra K. Lee, CLERK OF LARAMIE COUNTY, WY PAGE 1 OF 1

County Clerk Deputy

STATE OF WYOMING, Office of Clerk & Recorder, County of Laramie  
this block provided for county filing documentation

Corner Name: Northeast, Section: 2, T 18N, R 61W, 6th P.M., Cross-Index No.: A-21

SBRPEPLS/PLSW: March 1994; PLSW January 1998

County: Laramie, Wyoming